

NACHI

Hydraulic Equipment

for Industrial Machines



Pumps

Vane Pumps



Features

- Low Vibration and Noise
- High Efficiency Operation with Minimal Power Loss
- Precise Characteristics, Prompt Response

| Series | Mounting flange | Max. pressure MPa(psi) | Max. flow L/min(gpm) at 1800rpm |
|---------------|------------------------|------------------------|---------------------------------|
| VDS-0B-1A3-** | SAE A 2 bolts | 7(1015) | 15(4.0) |
| VDC-1B-1A5-** | SAE A 2 bolts (Note 1) | 14(2030) | 30(7.9) |
| VDC-1B-2A3-** | SAE A 2 bolts (Note 1) | 7(1015) | 40(10.6) |
| VDC-2B-1A5-** | SAE B 2 bolts (Note 2) | 14(2030) | 54(14.3) |
| VDC-2B-2A3-** | SAE B 2 bolts (Note 2) | 7(1015) | 70(18.5) |
| VDC-3B-1A5-** | SAE C 2 bolts | 14(2030) | 120(31.7) |

Notes:

Note 1 VDC-1B-*A*-E35 only has a SAE A 2 bolts type flange.

Note 2 VDC-2B-*A*-E35 only has a SAE B 2 bolts type flange.

Piston Pumps



Features

- Energy-saving type with drastically reduced loss.
- Because of increasing the number of pistons,(from 9 to 11) they operate with low-noise and low-pulsation. (PVS-2B, PZS)
- Many optional functions available.

| Series | Mounting flange | Max. pressure MPa(psi) | Max. flow L/min(gpm) at 1800rpm |
|-----------------|-----------------|------------------------|---------------------------------|
| PVS-0B-8N3-** | SAE A 2 bolts | 21(3045) | 14(3.7) |
| PVS-1B-16N3-** | SAE A 2 bolts | 21(3045) | 29(7.7) |
| PVS-1B-22N3-** | SAE A 2 bolts | 21(3045) | 40(10.6) |
| PVS-2B-35N3-** | SAE B 2 bolts | 21(3045) | 63(16.6) |
| PVS-2B-45N3-** | SAE B 2 bolts | 21(3045) | 81(21.4) |
| PZS-3B-70N4-** | — | 28(4060) | 126(33.3) |
| PZS-4B-100N4-** | SAE D 4 bolts | 28(4060) | 180(47.6) |
| PZS-5B-130N4-** | SAE E 4 bolts | 25(3625) | 234(61.8) |
| PZS-6B-180N4-** | SAE E 4 bolts | 25(3625) | 324(85.6) |

Uni-Pump



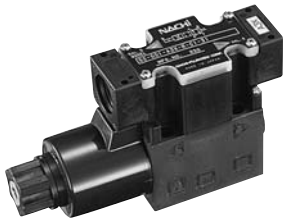
Features

- Energy Efficient Performance
- Lightweight, Compact Design
- Low Noise, Long Life
- 230vac and 460vac Electric Motors Available

| Series | Max. pressure MPa(psi) | Max. flow L/min(gpm) at 1800rpm |
|---------------|------------------------|---------------------------------|
| UVN-1A-0A4-** | 8(1160) | 14(3.7) |
| UVN-1A-1A4-** | 8(1160) | 29(7.7) |

■ Directional Control Valves

G01 Size Solenoid Operated Directional Control Valves



SS-G01 Series



SA-G01 Series

Features

- Recognized by Overseas Safety Standards (UL, CSA and CE)
- High Pressure, Large Capacity with Minimal Pressure Loss
- Low Power Consumption of Coil
- Indicator Light and COM Port Come Standard (SS-G01)
- M12 4 Pin Connector Available For Simple Wiring
- Low Switching Noise
- Very Long Life

| Series | Electrical Connection | Interface | Max. pressure MPa(psi) | Max. flow L/min(gpm) |
|---------------|-----------------------|---------------------|------------------------|----------------------|
| SS-G01-**-E31 | Terminal Box | ISO 4401-03-02-0-94 | 35(5075) | 100(26.4) |
| SA-G01-**-E31 | DIN Connector | ISO 4401-03-02-0-94 | 35(5075) | 100(26.4) |

G03 Size Solenoid Operated Directional Control Valves



SS-G03 Series

Features

- Recognized by Overseas Safety Standards (UL and cUL)
- High Pressure, Large Capacity with Minimal Pressure Loss
- Low Power Consumption of Coil
- Indicator Light and COM Port Come Standard (SS-G03)
- Low Switching Noise
- Very Long Life

| Series | Electrical Connection | Interface | Max. pressure MPa(psi) | Max. flow L/min(gpm) |
|---------------|-----------------------|---------------------|------------------------|----------------------|
| SS-G03-**-E21 | Terminal Box | ISO 4401-05-04-0-94 | 35(5075) | 160(42.3) |
| SA-G03-**-E21 | DIN Connector | ISO 4401-05-04-0-94 | 35(5075) | 160(42.3) |

Solenoid Controlled Pilot Operated Directional Valves



DSS-G06 Series

Features

- Recognized by UL
- High Pressure, Large Capacity with Minimal Pressure Loss
- Low Power Consumption of Coil
- Indicator Light and COM Port Come Standard (DSS-G06)
- Built-in Pilot Pressure Check Valve

| Series | Electrical Connection | Interface | Max. pressure MPa(psi) | Max. flow L/min(gpm) |
|----------------|-----------------------|---------------------|------------------------|----------------------|
| DSS-G06-**-E22 | Terminal Box | ISO 4401-08-07-0-94 | 32(4640) | 600(158.5) |
| DSA-G06-**-E22 | DIN Connector | ISO 4401-08-07-0-94 | 32(4640) | 600(158.5) |

Manually Operated Directional Control Valves



DMA Series

| Series | Interface | Max. pressure MPa(psi) | Max. flow L/min(gpm) |
|----------------|---------------------|------------------------|----------------------|
| DMA-G01-**-E20 | ISO 4401-03-02-0-94 | 35(5075) | 40(10.6) |
| DMA-G03-**-E20 | ISO 4401-05-04-0-94 | 35(5075) | 100(26.4) |

■ Modular Valves

Modular Valves Series



Modular Valve Series

Features

- Quick and Easy Circuit Configuration, Changes and Additions
- Compact Module Configurations Greatly Reduce Space Requirements and Maintenance Costs

| Mounting and Size | Interface | Max. pressure MPa(psi) | Max. flow L/min(gpm) |
|-------------------|---------------------|------------------------|----------------------|
| G01 | ISO 4401-03-02-0-94 | 25(3625) | 50(13.2) |
| G03 | ISO 4401-05-04-0-94 | 25(3625) | 100(26.4) |

■ Pressure Control Valves

Relief Valves

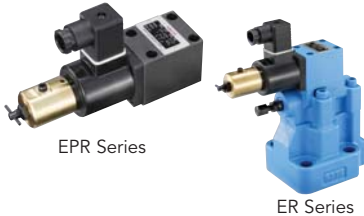


R Series

| Series | Interface | Max. pressure MPa(psi) | Max. flow L/min(gpm) |
|-------------|-----------|------------------------|----------------------|
| R-T06-3-E20 | NPT 3/4 | 21(3045) | 170(44.9) |
| R-T10-3-E20 | NPT 1 1/4 | 21(3045) | 380(100.4) |

■ Proportional Control Valves

Proportional Pressure Control Valve Series



EPR Series

ER Series

| Series | Interface | Max. pressure MPa(psi) | Max. flow L/min(gpm) |
|---------------|---------------------|------------------------|----------------------|
| EPR-G01-5-E12 | ISO 4401-03-02-0-94 | 35(5075) | 1.2(0.3) |
| ER-G03-5-E21 | ISO 6264-AR-06-2-A | 35(5075) | 150(39.6) |
| ER-G06-5-E21 | ISO 6264-AS-08-2-A | 35(5075) | 320(84.5) |

Proportional Flow Control Valve Series



ES Series

| Series | Interface | Max. pressure MPa(psi) | Max. flow L/min(gpm) |
|----------------|-----------|------------------------|----------------------|
| ES-G02-30-E12 | Sub plate | 21(3045) | 30(7.9) |
| ES-G03-125-E12 | Sub plate | 21(3045) | 125(33.0) |
| ES-G06-250-E11 | Sub plate | 21(3045) | 250(66.1) |
| ES-G10-500-E11 | Sub plate | 21(3045) | 500(132.1) |

Proportional Directional and Flow Control Valve Series



ESD Series

| Series | Interface | Max. pressure MPa(psi) | Max. flow L/min(gpm) |
|-------------------|---------------------|------------------------|----------------------|
| ESD-G01-C520-E12 | ISO 4401-03-02-0-94 | 25(3625) | 25(6.6) |
| ESD-G03-C580-E12 | ISO 4401-05-04-0-94 | 25(3625) | 100(26.4) |
| ESD-G06-C5250-E13 | ISO 4401-08-07-0-94 | 25(3625) | 250(66.1) |

NACHI

NACHI AMERICA INC.

17500 23 Mile Road, Macomb, MI 48044 • Tel. (800)622-4410 Fax. (586)226-5289

Email: hydraulics@nachi-america.com www.nachihydraulics.com